



SPECIFICATION SHEET  
12SLHF24SSC

DESCRIPTION:  
12" LONGITUDINALLY SLOTTED  
STAINLESS STEEL GRATE

WRITTEN SPECIFICATION:

Grating shall be 12SLHF24SSC, as manufactured by Eric'sons, 296 Industrial Blvd. N., Dallas, GA 30132, (770) 505-6575. Grating shall have ADA compliant and heel proof longitudinal slots. The grate shall be made of grade T304 stainless steel per ASTM A-240. The grate surface shall have a sandblasted finish. The grate shall be 12" wide x 24" long x 1 1/2" thick and have a minimum load rating of DIN Class C (exceeds H-20/HS-25).

PRODUCT DATA

MATERIAL:	T304 STAINLESS STEEL
FINISH:	SANDBLASTED
ADA COMPLIANT:	YES
HEEL PROOF:	YES
LOCKING DEVICE:	CLIPLOCK
WEIGHT (LB):	40
OPEN AREA (IN²/LF):	25

LOAD RATINGS

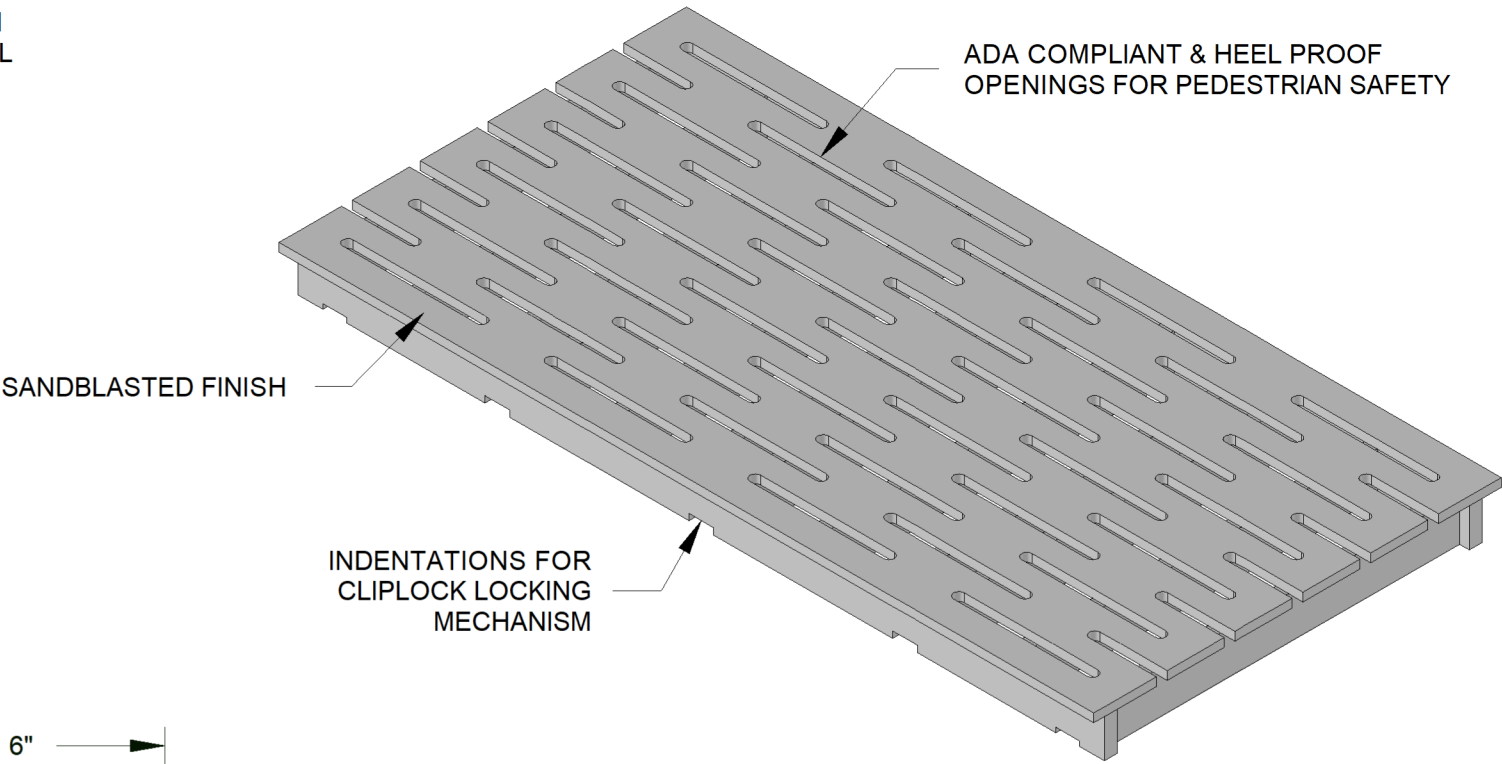
DIN / EN1433:	CLASS C
AASHTO:	EXCEEDS M-306, H-20, & HS-25
ASME:	MEDIUM DUTY
FAA:	NO
LOAD CAPACITY:	967 PSI

PHONE: 770-505-6575	MODEL BY:	LRC
296 INDUSTRIAL BLVD. N. DALLAS, GA 30132	DRAWING BY:	EV
	REVIEWED BY:	LRC
222 WEST 33RD ST. OGDEN, UT 84401	DATE:	07/26/2024
13300 RAMBLEWOOD DR. CHESTER, VA 23836	SCALE:	1 : 4
	REV # :	IC-0

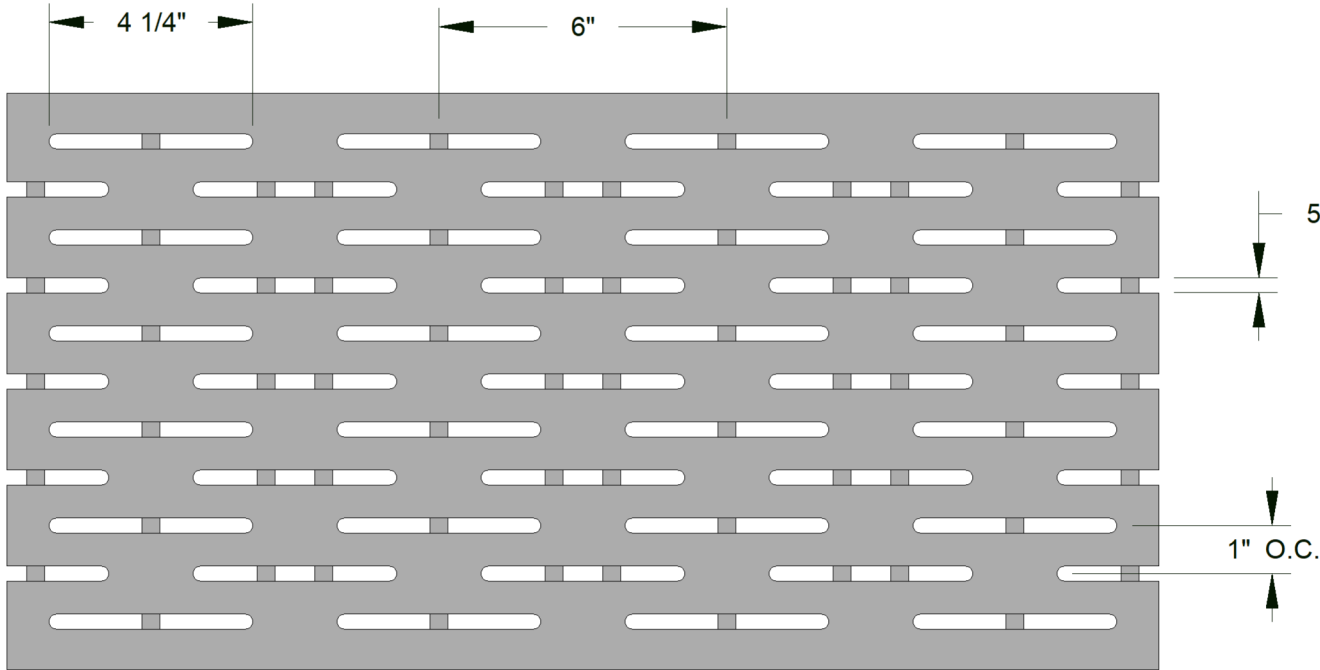
WWW.DURATRENCH.COM

NOTES

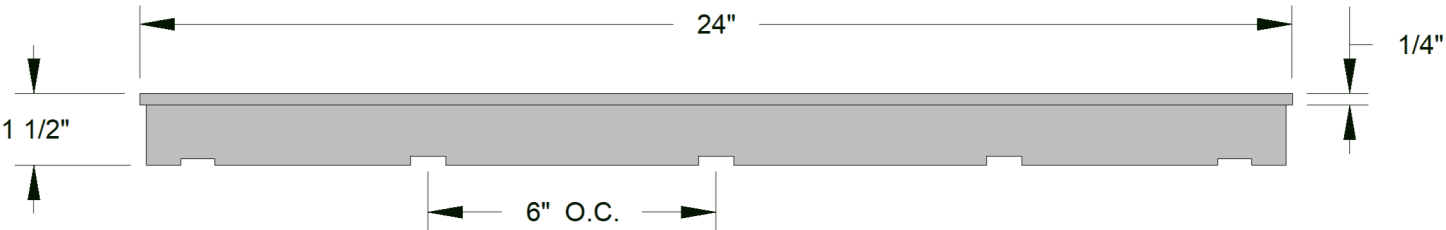
- GRATES MAY BE MANUFACTURED TO REQUIRED RADII
- ADA COMPLIANCE DEPENDS ON DIRECTION OF TRAVEL



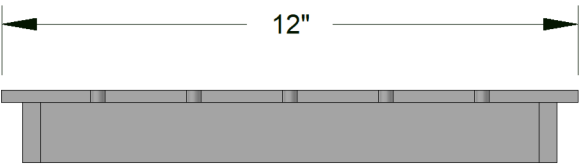
ISOMETRIC VIEW



TOP VIEW



SIDE VIEW



END VIEW

TOLERANCES

- X = ±0.1
- .XX = ±0.04
- .XXX = ±0.004
- FRACTIONAL = ± 1/16"
- ANGULAR = ± 0.5°